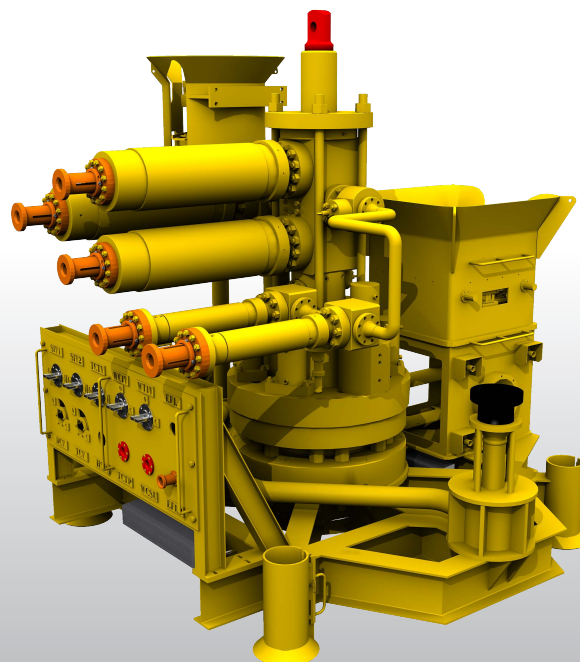


DESIGN PARAMETERS



The Argus Subsea AZ-10 tree system is designed in accordance with API 6A, 17D, and NACE MR0175.

Design Operational Life	20 years	
Type of Service	Production, Injection, Well Test	
Medium	Oil, Gas, Water	
Installation Method	Guideline or Guidelineless	
Water Depth Capability	6,000 ft (1,829 m)	
Temperature Rating	250°F (121°C)	
API PSL Level	API 6A/17D PSL 3	
Gas Lift Capability	Yes	
Working Pressure	10,000 psi (689 bar)	
Wellhead Interface	18 ³ / ₄ " 10,000/15,000 psi - H4 profile	
Casing Interface Size	9 ⁵ / ₈ " (47.5 – 53.5 lb/ft)	
Production / Injection Spool Bore	4"	
Production / Injection Spool Bore Connection	Horizontal Flange or Remote Connection	
Annulus Outlet Bore Size	2"	
Well Annulus Access Size	3.14 in ² (in 2" x 1" Ports)	
Annulus Monitoring	Through Control Umbilical and Pressure Transducer	
Control System Type (Supplied by Operator)	Multiplexed Electro-Hydraulic or Direct Hydraulic	
Tree Valve Actuator Closure	Spring Return, FSC	
Control Pressure	Tree Valves	207 (3000 psi)
	SCSSSV	863 bar (12,500 psi) max
Control Fluid – Client Selection	Water Based	
Hydraulic Fluid Cleanliness	ISO 4406	Class 15/12
Electrical Monitoring	Tree Production, Down Hole and Annulus - Pressure and Temperature	
Materials of Construction	The tree, and all internal components, are designed in accordance with API 6A and 17D material class level 'FF' for sour service and temperature rating "V".	